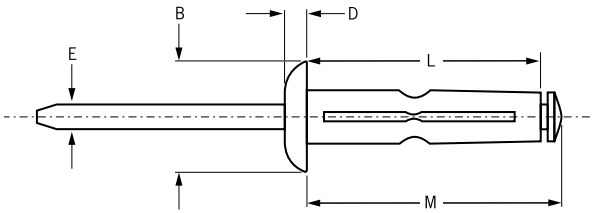


# Klamp-Tite® BAPK



English	Français	Deutsch	Italiano	Español
Protruding head	Tête bombée	Flachrundkopf	Testa tonda	Cabeza alomada
Body: Aluminium alloy* Wax lubricated	Corps: Alliage d'aluminium* Lubrifié	Hülse: Aluminium* Gewachst	Corpo: Lega di alluminio* Lubrificato	Cuerpo: Aluminio* Lubricado
Stem: Aluminium alloy** Wax lubricated	Tige: Alliage d'aluminium** Lubrifié	Dorn: Aluminium** Gewachst	Gambo: Lega di alluminio** Lubrificato	Vástago: Aluminio** Lubricado

\*: 5056 \*\*: 2024/5056



ø					M	B	D	L	E			Part No/ref
	min.	max.	min.	max.								
4.8 (3/16")	1.27	6.35	5.18	5.31	25.40	11.30	2.37	22.72	2.90	1.3	1.7	BAPK-64
	4.75	9.53			27.81			25.13				BAPK-66
	9.53	14.27			30.94			28.25				BAPK-69
6.4 (1/4")	1.52	6.35	6.40	6.65	26.47	14.22	3.00	23.50	3.84	1.9	2.6	BAPK-84
	4.75	9.53			29.64			26.67				BAPK-86

all dimensions in mm / en millimètres / alle Maße in mm / in millimetri / en milímetros

1) typical values / valeurs moyennes / typische Werte / Valori tipici / resistencias máximas recomendadas



An Acument™ Global Technologies Company

www.avdel-global.com

© 2007 Acument Intellectual Properties, LLC

Klamp-Tite® is a trademark of Acument Intellectual Properties, LLC

05.2007

Data shown is subject to change without prior notice as a result of continuous product development and improvement policy.  
Your local Avdel representative is at your disposal should you need to confirm latest information.